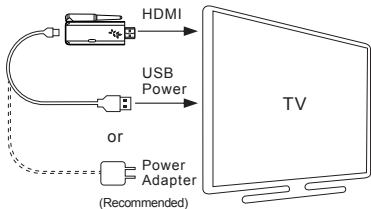


SCREENCAST SETUP

SCREENCASTING FROM ANDROID 4.2+ DEVICES

PLEASE READ THESE INSTRUCTIONS CAREFULLY PRIOR TO INSTALLATION

NOTE: *THESE STEPS ARE FOR STOCK ANDROID 4.2. STEPS FOR OTHER MANUFACTURERS VERSIONS OF ANDROID 4.2 MAY DIFFER.*



1 Connect the dongle as outlined in the Quick Setup Guide.

DE: Schließen Sie den Dongle, wie in der Kurzanleitung beschrieben.

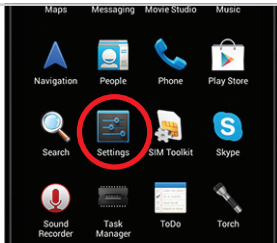
FR: Branchez le dongle comme indiqué dans le Guide d'installation rapide.

NL: Sluit de dongle, zoals beschreven in de installatiehandleiding.



2 Ensure the dongle is set to Screeencast Mode. Press the Fn button to swap between modes.

- DE: Sicherstellen, dass der Dongle eingestellt auf Modus Screeencast. Drücken Sie die Fn-Taste, um zwischen den Modi zu wechseln.
- FR: S'assurer que le dongle est réglé sur le mode Screeencast. Appuyez sur la touche Fn pour basculer entre les modes.
- NL: Zorg ervoor dat de dongle is ingesteld op modus Screeencast. Druk op de Fn-knop om te wisselen tussen de modi.

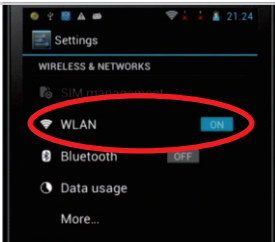


3 On your device, go to **Settings**.

DE: Auf Ihrem Gerät, gehen Sie zu Einstellungen.

FR: Sur votre appareil, allez dans Paramètres.

NL: Op je toestel, ga naar Instellingen.

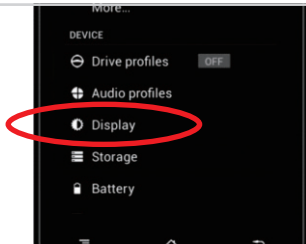


4 Ensure that WiFi (WLAN) is turned ON.

DE: Stellen Sie sicher, dass WLAN eingeschaltet ist.

FR: Assurez-vous que le WiFi (WLAN) est activé.

NL: Ervoor zorgen dat WiFi (WLAN) is ingeschakeld.

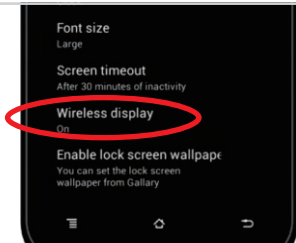


5 Scroll down and tap on Display.

DE: Blättern Sie nach unten und tippen Sie auf Anzeigen.

FR: Faites défiler vers le bas et tapez sur l'écran.

NL: Scroll naar beneden en tik op Weergeven.

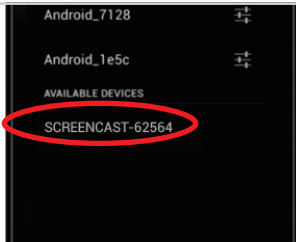


6 Look for an option called **Wireless Display** and tap on it.

DE: Suchen Sie nach einer Option namens Kabellose Übertragung und tippen Sie darauf.

FR: Recherchez une option appelée Affichage Sans Fil et appuyez dessus.

NL: Kijk voor een optie genaamd Draadloze Display en tik erop.

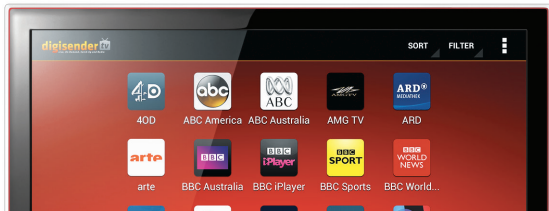


7 In the list of *Available Devices*, tap on **SCREENCAST-12345**.

DE: In der Liste der verfügbaren Geräte auf **SCREENCAST-12345** tippen.

FR: Dans la liste des périphériques disponibles, appuyez sur **SCREENCAST-12345**.

NL: In de lijst met beschikbare apparaten, tikt u op **SCREENCAST-12345**.

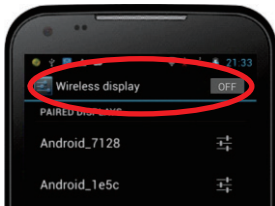


8 After a few moments you should see your Android screen on your TV.

DE: Nach ein paar Augenblicken sollten Sie Ihren Android-Bildschirm auf Ihrem TV.

FR: Après quelques instants, vous devriez voir votre écran Android sur votre téléviseur.

NL: Na een paar momenten moet je je Android-scherm op de tv te zien.



9 To stop the Screencast, simply turn Wireless Display OFF on your Android device.

DE: Um den Screencast zu stoppen, schalten Sie einfach drahtlose Display OFF auf Ihrem Android-Gerät.

FR: Pour arrêter la Screencast, il suffit de tourner Display sans fil OFF sur votre appareil Android.

NL: Om de screencast te stoppen, zet u gewoon Wireless Display OFF op je Android toestel.

We,

AEI Security & Communications Limited,

**DECLARATION OF CONFORMITY
2006201301/DGTV-DGIM**

declare under our sole responsibility that the products bearing the series code prefixed: *DGTVx, DGIMx (x refers to the specific model number)* are in conformity with the essential requirements of Directive 1995/5/EC. These products have been tested against the following standards and specifications:

Low Voltage Directive

BS EN 60950-1:2006+A12:2011

Information technology equipment. Safety . General requirements.

Electromagnetic Compatibility Directive

BS EN 55022:2010+AC:2011

Information technology equipment. Radio disturbance characteristics. Limits and methods of measurement.

BS EN 55024:2010

Information technology equipment. Immunity characteristics. Limits and methods of measurement.

BS EN 61000-3-2:2006+A2:2009 *Electromagnetic compatibility (EMC). Limits. Limits for harmonic current emissions (equipment input current ≤ 16 A per phase).*

BS EN 61000-3-3:2008

Electromagnetic compatibility (EMC). Limits. Limitation of voltage changes, voltage fluctuations and flicker in public low-voltage supply systems, for equipment with rated current ≤ 16 A per phase and not subject to conditional connection.

Radio Equipment and Telecommunications Terminal Equipment (R&TTE) Directive

BS EN 62311:2008

Assessment of electronic and electrical equipment related to human exposure restrictions for electromagnetic fields (0 Hz - 300 GHz).

BS EN 60950-1:2006+A12:2011

Information technology equipment. Safety . General requirements.

ETSI EN 301 489-1 v1.9.2 (2011-09)

Electromagnetic compatibility and Radio spectrum Matters (ERM); ElectroMagnetic Compatibility (EMC) standard for radio equipment and services; Part 1: Common technical requirements.

ETSI EN 301 489-17 v2.1.1 (2009-05)

Electromagnetic compatibility and Radio spectrum Matters (ERM); ElectroMagnetic Compatibility (EMC) standard for radio equipment; Part 17: Specific conditions for Broadband Data Transmission Systems.

ETSI EN 300 328 v1.8.1 (2012-04)

Electromagnetic compatibility and Radio spectrum Matters (ERM); Wideband transmission systems; Data transmission equipment operating in the 2,4 GHz ISM band and using wide band modulation techniques; Harmonized EN covering essential requirements under article 3.2 of the R&TTE Directive.

The product is marked with the CE marking and Notified Body Number according to directive 1999/5/EC.

Note: Original Declaration of Conformity has been signed.

SPECIFICATIONS

Model DGIMD13

Operating System Linux 3.0.8

CPU 1.2GHz Rockchip RK2928 ARM Cortex A9

Graphics Processing ARM Mali-400 GPU

HD Video Decoder 1080p @ 60fps

Memory 256MB DDR3

WiFi 802.11 b/g/n

Connections 1x HDMI, 1x Micro USB

ScreenCast Mode Android 4.2+ Devices

MediaCast Mode All UPnP compatible Devices

Power 5V / 1A

Dimensions 75 x 33 x 9.3 mm

DigiSender, iMedia, ScreenCast SUPERSMART and their respective logos are trademarks or registered trademarks of AEI Security & Communications Ltd.

© AEI Security & Communications Ltd. All rights reserved.